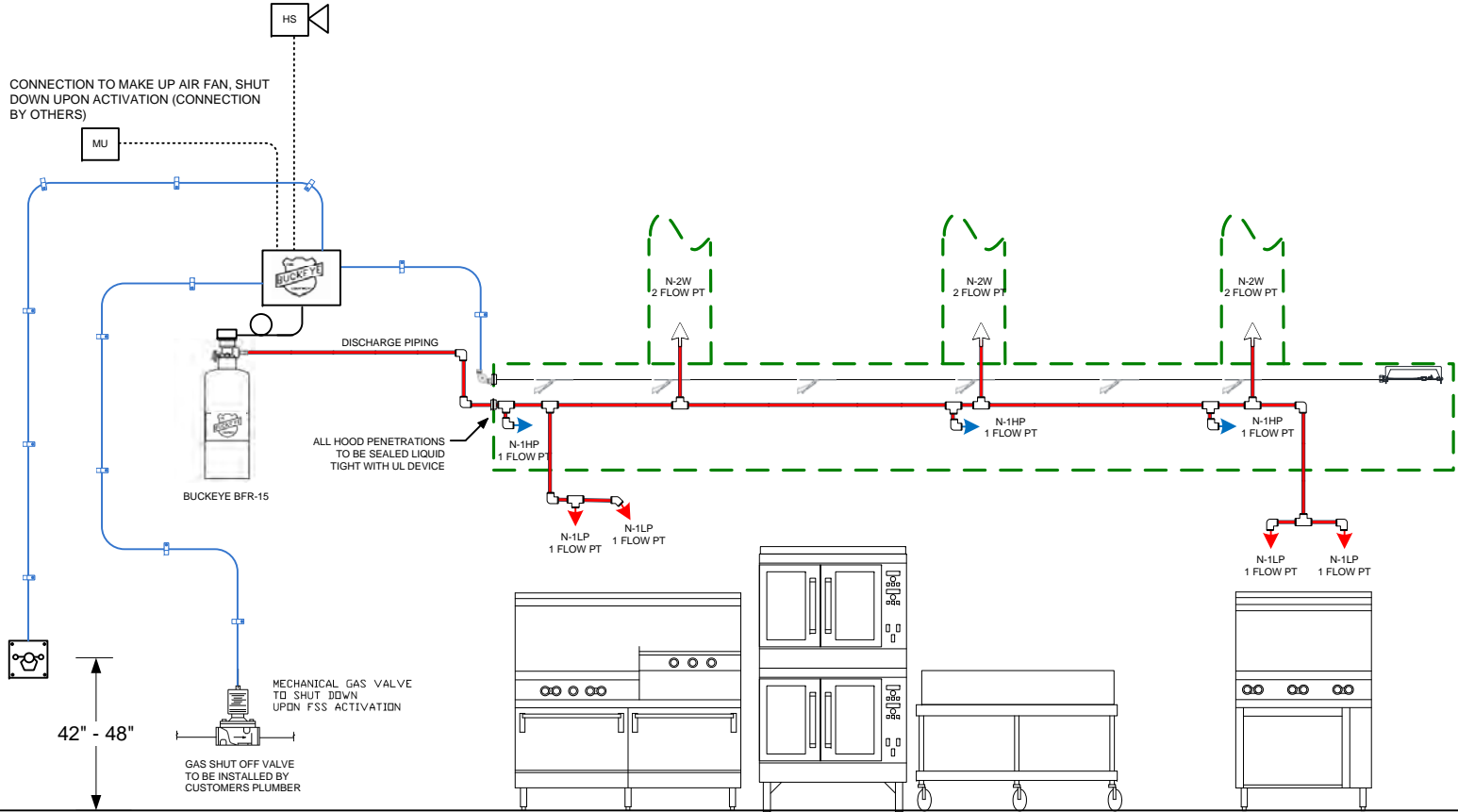


CONNECTION TO HORN STROBE OR F.A.C.P.
ACTIVATES UPON SYSTEM DISCHARGE
(SUPPLIED, INSTALLED AND WIRED BY OTHERS)

EXISTING HOOD: 20'-0" BY OTHERS



CONNECTION TO MAKE UP AIR FAN, SHUT
DOWN UPON ACTIVATION (CONNECTION
BY OTHERS)



NOZZLE SPECIFICATIONS		
Model Number	Flow Points	Band Color
N-1HP	1	BLUE
N-1LP	1	RED
N-2HP	2	GREEN
N-2LP	2	YELLOW
N-2W	2	WHITE



CLASS K WET CHEMICAL EXTINGUISHER
SHALL BE INSTALLED 42" - 48" ABOVE THE FINISHED FLOOR

REMOTE PULL STATION

SHALL BE INSTALLED 42" - 48" ABOVE THE FINISHED FLOOR AND A DISTANCE OF AT LEAST 10FT FROM THE HAZARD BUT NOT MORE THAN 20FT. IT SHALL BE INSTALLED IN THE PATH OF EXIT AND REQUIRE A MAXIMUM FORCE OF 40 LBS AND A MAXIMUM MOVEMENT OF 14" FOR ACTUATION

PIPING VOLUME CHART	
PIPE SIZE	VOLUME PER FOOT
3/8 in pipe	37.5 ml / ft
1/2 in pipe	59.8 ml/foot

Minimum Piping Requirements (Wok, Range, & DFF only):

- > Min. # of elbows before closest nozzle: 5.
- > Min. pipe volume before closest nozzle: 360 mL.
- > Total system pipe volume: 600 mL.
- > Minimum number of flow points in system: 3.

PIPING LIMITATIONS			
CYL SIZE	MAX FLOW PTS	MAX PIPE VOL (ml)	MAX PIPE VOL BET. TWO NOZ (ML)
BRF-5	5	1500	1000
BRF-10	10	2500	2000
BRF-15	15	2800*	2500
BRF-20	20	2800*	2500

Piping Limitations:

- > 3/8" or 1/2" Sch. 40 black pipe.
- > Pipe sized largest to smallest only.
- > No "traps" allowed.
- > Straight or split line piping allowed. No nozzles before a split.
- > Max. number of elbows between any 2 nozzles: 5.
- > Max. vertical rise: 10 feet.
- > Max. vertical rise from nozzle to supply line: 2 feet.

* Total Volume of 3/8" piping allowed on BRF-15 or BRF-20 is 2500 ml

**BUCKEYE KITCHEN MISTER
BFR-15 - 15 FLOW POINT SYSTEM**

THIS SYSTEM UTILIZES 14 of 15 POINTS

PRE-ENGINEERED SYSTEM SHOP DRAWING ONLY – NOT TO SCALE

DRAFT

SIZE	FSCM NO	DWG	REV
		KITCHEN FIRE SYSTEM	
SCALE	N/A	SHEET	1 OF 4

GENERAL NOTES:

1. System shall be Pre-Engineered
2. System shall be manufactured by Buckeye Fire Equipment of Kings Mountain NC
3. System to be installed by -----
4. Buckeye Kitchen Mister systems have the following Listings and Approvals:

Underwriters Laboratories Inc, UL 300 / UL 1254, UL EX 6885
ISO-9001 Registered
5. System Temperature Limitations – 32F min / 120F Max
6. Installation requirements, nozzle limitations and design criteria shall comply with the Buckeye Fire Equipment, Kitchen Mister Technical Manual and all addendums as published by Buckeye Fire Equipment
7. Pipe and fittings shall be Schedule 40 Black, Chrome Plated or Stainless. Galvanized Pipe Shall Not Be Used.
8. All required electrical work shall be performed by others and is not included on this shop drawing.
9. All required plumbing work be performed by others and is not included on this shop drawing

Minimum Piping Requirements

Note: Minimum piping requirements **only** apply when protecting a wok, deep fat fryer or range.

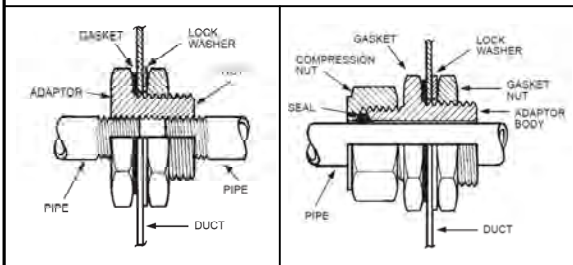
1. Minimum number of elbows before the closest nozzle protecting a fryer, range or wok shall be five (5)
2. The minimum piping volume before the closest nozzle protecting a fryer, range or wok shall not be less than 360 ml.
3. The total system pipe volume shall not be less than 660 ml for all cylinder sizes.
4. A system shall have a minimum of three (3) flow points.

General Piping Requirements

1. All piping shall be 3/8" or 1/2"
2. Split piping and straight line piping are allowed on all system as long as the total piping parameters are not exceeded.
3. When the discharge piping is split, no nozzles can be installed before the split.
4. The maximum number of elbows allowed per system are:

BRF-5	20 elbows maximum
BRF-10/15/20	25 elbows maximum
5. The maximum number of elbows between any two nozzles is five(5)
6. The maximum vertical rise of the supply line is ten (10) feet; this is either the maximum elevation difference between tank outlet and the highest nozzle or tank outlet and the highest of lowest point in the piping systems.
7. The maximum vertical rise of any nozzle above the supply line is two (2) feet.
8. No traps are allowed in the piping system.
9. When different size piping is used in the same system, the largest diameter piping must be closest to the cylinder and sizes are to decrease as they reach the nozzle. So piping always runs from larger to smaller diameter
10. Elbows or swivel adaptors used at the nozzle for aiming DO NOT count toward the total elbows allowed per system or the number of elbows allowed between two (2) nozzles.
11. For the BRF-15 and BRF-20 only, the maximum volume of piping between the nozzle nearest the supply line from one branch to the closest nozzle from the next branch shall not exceed 500 ml.

ALL PENETRATIONS TO THE HOOD SHALL BE SEALED WITH AN APPROVED QUICK SEAL DEVICE



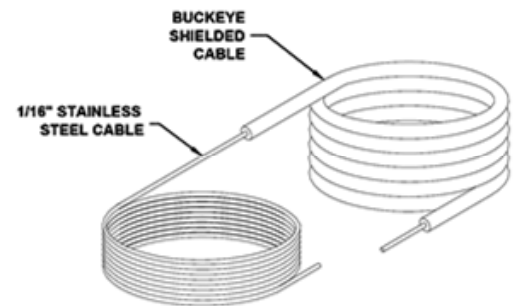
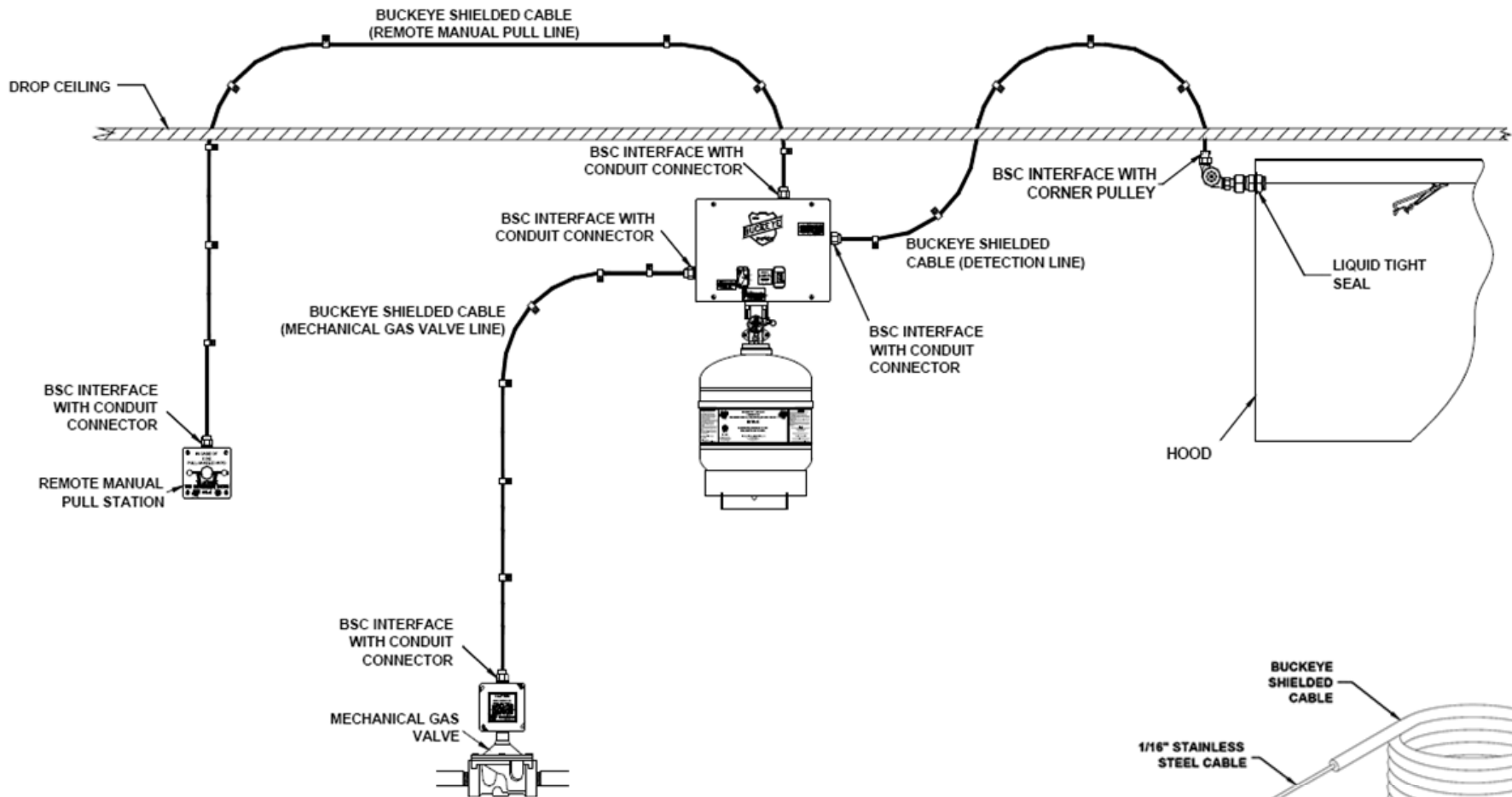
Listings and Approvals

The *Kitchen Mister* Fire Suppression System is Listed and Approved by the following agencies:

- Underwriters Laboratories, Inc. (Listed to the requirements of UL-300/UL-1254) UL-EX 6885
- Underwriters Laboratories of Canada, ULC-EX 6885
- Approved by the New York City Fire Department COA # 5550
- CE Compliant
- ISO-9001 Registered

DRAFT

	SIZE	FSCM NO	DWG	REV	
			KITCHEN FIRE SYSTEM		
	SCALE	N/A	SHEET	2 OF 4	



**Buckeye Shielded Cable Installation
Typical Installation**

CONDUIT AND BUCKEYE SHIELDED CABLE (BSC) LIMITATIONS						
FUNCTION	MAX. CONDUIT LENGTH (FT)	MAXIMUM NUMBER OF CORNER PULLEYS	MAX. LENGTH OF BSC (FT)	MAXIMUM NUMBER OF BENDS IN THE BSC (MIN. BEND RADIUS)	BSC TO CONDUIT TRANSITIONS (NUMBER OF BSCI)	MAXIMUM NUMBER OF FUSIBLE LINKS AND HOLDERS
FUSIBLE LINK LINE; CONDUIT & BSC	25	8	35	6 (9")	6	10
GAS VALVE LINE; CONDUIT & BSC	25	8	35	6 (9")	6	NA
RPS-M LINE; CONDUIT & BSC	25	8	35	6 (9")	6	NA
FUSIBLE LINK LINE; CONDUIT ONLY	150	35	NA	NA	NA	20
GAS VALVE LINE; CONDUIT ONLY	150	35	NA	NA	NA	NA
RPS-M LINE; CONDUIT ONLY	150	35	NA	NA	NA	NA
FUSIBLE LINK LINE; BSC ONLY	NA	NA	35	6 (9")	6	10
GAS VALVE LINE; BSC ONLY	NA	NA	35	6 (9")	6	NA
RPS-M LINE; BSC ONLY	NA	NA	35	6 (9")	6	NA

> BSC CAN NOT be coiled or looped when installed.

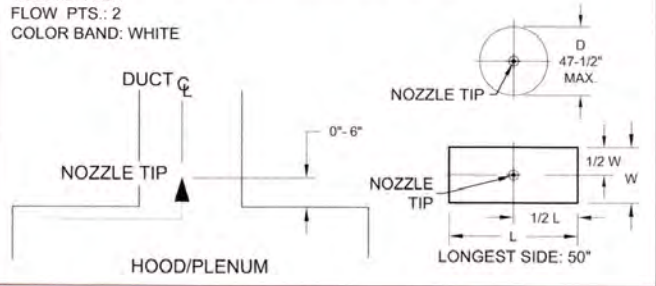
DRAFT

SIZE	FSCM NO	DWG	REV
		KITCHEN FIRE SYSTEM	
SCALE	N/A	SHEET	3 OF 4

BUCKEYE FIRE SYSTEM NOZZLE COVERAGES

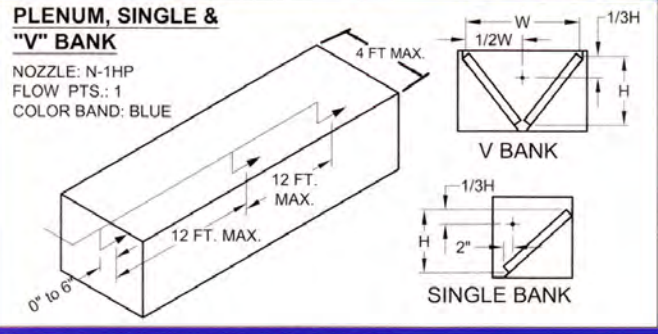
DUCT, LARGE (150" MAXIMUM PERIMETER)

NOZZLE: N-2W
FLOW PTS.: 2
COLOR BAND: WHITE



PLENUM, SINGLE & "V" BANK

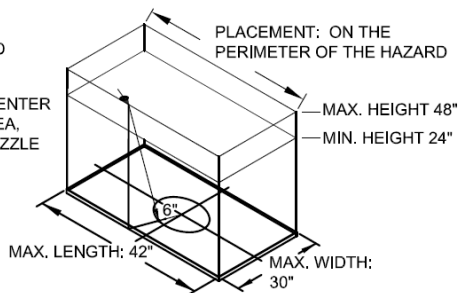
NOZZLE: N-1HP
FLOW PTS.: 1
COLOR BAND: BLUE



GRIDDLE, STANDARD (42" MAX.)

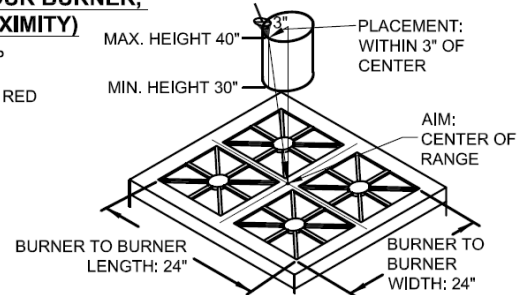
NOZZLE: N-1LP
FLOW PTS.: 1
COLOR BAND: RED

AIM: 6" FROM CENTER OF HAZARD AREA, INLINE WITH NOZZLE



RANGE, FOUR BURNER, (HIGH PROXIMITY)

NOZZLE: N-1LP
FLOW PTS.: 1
COLOR BAND: RED



DRAFT

SIZE	FSCM NO	DWG	REV
		KITCHEN FIRE SYSTEM	
SCALE	N/A	SHEET	4 OF 4